

CERAMBYX CERVICORNIS.



CHARACTER GENERICUS.

Antennæ fetaceæ.

Palpi quatuor.

Thorax spinosus aut gibbus.

Elytra linearia.

Lin. Syst. Nat. Gmel. p. 1814.

CHARACTER SPECIFICUS, &c.

CERAMBYX thorace utrinque tridentato, mandibulis porrectis corniformibus spinosis, elytris fusco et flavescente variis.

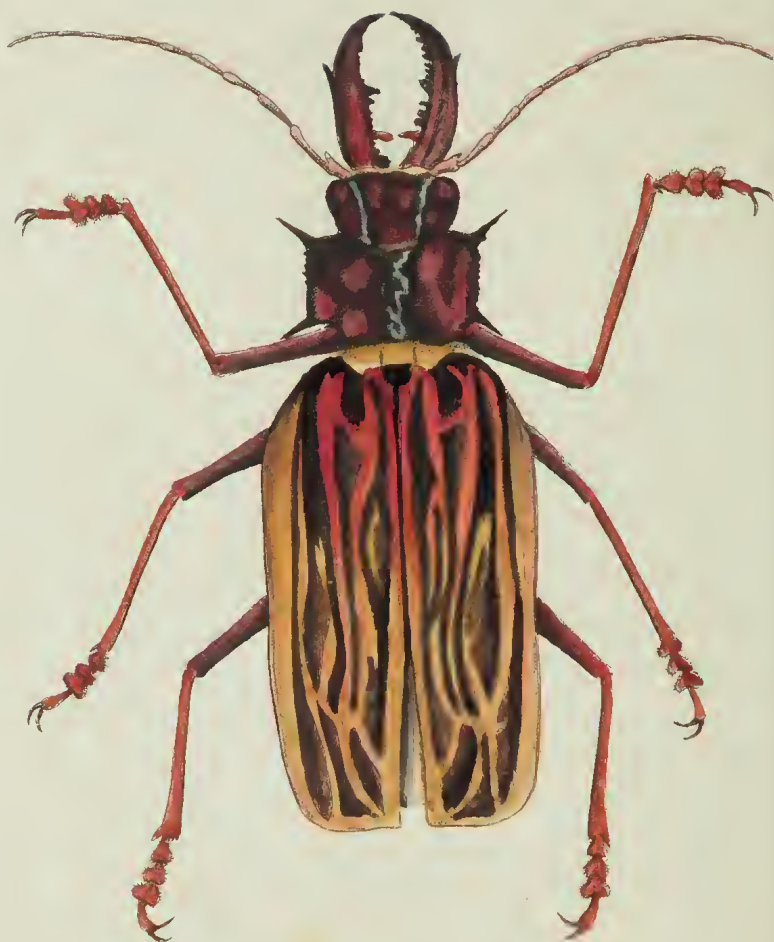
CERAMBYX thorace marginato dentato, maxillis porrectis corniformibus utrinque spinosis, antennis brevibus.

Lin. Syst. Nat. p. 622.

CERAMBYX thorace utrinque tridentato, mandibulis porrectis, extus unispinosis, antennis brevibus.

Lin. Syst. Nat. Gmel. p. 1814.

Magnitudine naturali depingitur *Cerambyx cervicornis*, inter maximos sui generis numerandus. In America meridionali præcipue conspicitur.



THE
STAG-HORNED CERAMBYX.



GENERIC CHARACTER.

Antennæ setaceous.

Thorax either spinose or gibbose.

Palpi four.

Wing-Cases long or linear.

SPECIFIC CHARACTER, &c.

Great CERAMBYX, with the thorax tridentated on each side; the jaws resembling horns; the wing-sheaths variegated with brown and yellowish.

The Stag-horned variegated CERAMBYX.

Le BUFLARD de Cayenne.

Daubent. Pl. Enl. 90. fig. 3.

Mer. Sur. pl. 48.

Roes. 2. p. 12. t. 1. f. B.

Sloan. Jam. 2. t. 237. f. 6.

The Stag-horned Cerambyx, which is one of the largest insects of the genus, is a native of South America, and is represented on the plate in its natural size.